

Name: _____

Date: _____

1. **Redwood trees can grow to be very tall. They can grow so tall because they are —**

- A. vascular
- B. deciduous
- C. nonvascular
- D. flowering

*Permission has been granted for reproduction by the Virginia Department of Education
© Virginia Department of Education*

2. **Some birds fly south for the winter. Birds know when and where to fly because of —**

- A. camouflage
- B. mimicry
- C. instinct
- D. hibernation

*Permission has been granted for reproduction by the Virginia Department of Education
© Virginia Department of Education*

3. **How is a fish different from a jellyfish?**

- A. A fish has a backbone.
- B. A fish is in the animal kingdom.
- C. A fish can reproduce.
- D. A fish lives in water.

*Permission has been granted for reproduction by the Virginia Department of Education
© Virginia Department of Education*

4. **Smelts are fish that lay their eggs in the sand on beaches. When the eggs hatch, the babies know to go to the water. This is an example of —**

- A. instinct
- B. hibernation
- C. camouflage
- D. learned behavior

*Permission has been granted for reproduction by the Virginia Department of Education
© Virginia Department of Education*

5.



The picture shows a bumblebee. Which part of the bumblebee is most helpful in identifying it as an insect?

- A. Shape of eyes
- B. Number of legs
- C. Presence of wings
- D. Location of antennae

*Permission has been granted for reproduction by the Virginia Department of Education
© Virginia Department of Education*

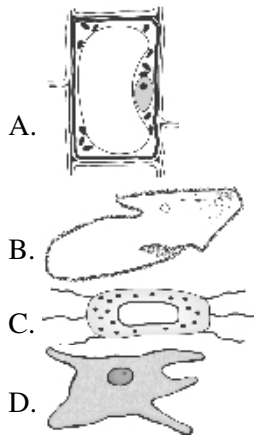
6. The chart below shows some characteristics of vertebrates and invertebrates.

Vertebrates	Invertebrates
Backbone	No backbone
Larger	Smaller

Which of these animals would be considered a vertebrate?

- A. fish
- B. clam
- C. sponge
- D. octopus

7. Which cell is a plant cell?



8.

Fish, amphibians, reptiles, birds and mammals all belong to which group?

- A. vertebrate
- B. invertebrate
- C. classification
- D. vertebrate and invertebrate

9.

Which of the following is true about vertebrates?

- A. vertebrate bodies are more complex than those of invertebrates
- B. there are many more vertebrates than invertebrates
- C. vertebrates are primitive animal groups
- D. vertebrates have no backbone

10.

Which of these microorganisms is considered harmful?

- A. fungus in antibiotics
 - B. bacteria in yogurt
 - C. yeast in bread
 - D. mold on fruit
-

11.

Some bacteria can be beneficial because they produce

- A. cheese.
 - B. fruit.
 - C. water.
 - D. energy.
-

12.

Read the passage.

Karen has two sisters and one younger brother. Her parents and grandmother also live with her. She is the only blonde in her family. However, everyone in her family has brown eyes.

Which of these is being described in the passage?

- A. gene display
 - B. inherited traits
 - C. learned behaviors
 - D. nature versus nurture
-

13.

Which of these is the correct definition for a gene?

- A. a single cell organism
- B. a string of Mitochondrial DNA
- C. non-hereditary traits such as learned behaviors
- D. a hereditary unit consisting of a sequence of DNA

Answer Key

1. A) vascular

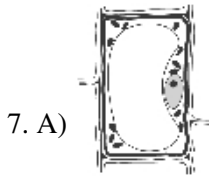
2. C) instinct

3. A) A fish has a backbone.

4. A) instinct

5. B) Number of legs

6. A) fish



8. A) vertebrate

9. A) vertebrate bodies are more complex than those of invertebrates

10. D) mold on fruit

11. A) cheese.

12. B) inherited traits

13. D) a hereditary unit consisting of a sequence of DNA