

Name: _____

Date: _____

1. Which of these is **not** an instinctive behavior?

- A. a bird building a nest
- B. a turtle burying its eggs
- C. a bear hibernating in winter
- D. a horse pulling a plow

This online assessment item contains material that has been released to the public by the Massachusetts Department of Education.

2. Which cellular structure is found in plants, but not in animals?

- A. mitochondria
- B. nucleus
- C. chloroplast
- D. endoplasmic reticulum

3. Which is NOT a characteristic of organisms in the animal kingdom?

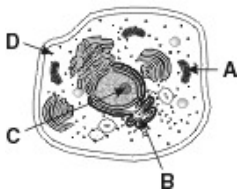
- A. They use sunlight to produce their own food.
- B. They are made up of many different cells.
- C. They have the ability to move.
- D. They have cell membranes.

4. Organisms with a body covering of feathers are classified as

- A. birds.
- B. fish.
- C. insects.
- D. mammals.

5.

Use the diagram below to answer this question.



Which arrow points to a mitochondrion?

- A. arrow A
- B. arrow B
- C. arrow C
- D. arrow D

6. A biologist discovers a new multicellular organism. The biologist is not sure if it is a plant or an animal. She decides to look at the cells under a microscope. Which structure would **best** indicate that the organism is a plant?

- A. chloroplast
 - B. Golgi body
 - C. ribosome
 - D. lysosome
-

7. Biologists use various traits to classify living things. Which of the following would be **least** useful in a classification scheme for mammals?

- A. color of hair
 - B. shape of teeth
 - C. skeleton bones
 - D. digestive systems
-

8. How are dandelion seeds different from apple seeds?

- A. Dandelion seeds produce new plants.
 - B. Dandelion seeds are not formed from the flowers.
 - C. Dandelion seeds need rain, soil, and sunlight to germinate.
 - D. Dandelion seeds are light and can be carried by the wind.
-

9. Which animals are cold-blooded, live part of their lives in water and part on land, and go through metamorphosis?

- A. reptiles
 - B. amphibians
 - C. birds
 - D. mammals
-

10. Which structures differentiate plants from other organisms?

- A. cell membranes
- B. cell walls
- C. nuclei
- D. veins

Answer Key

1. D) a horse pulling a plow
2. C) chloroplast
3. A) They use sunlight to produce their own food.
4. A) birds.
5. A) arrow A
6. A) chloroplast
7. A) color of hair
8. D) Dandelion seeds are light and can be carried by the wind.
9. B) amphibians
10. B) cell walls